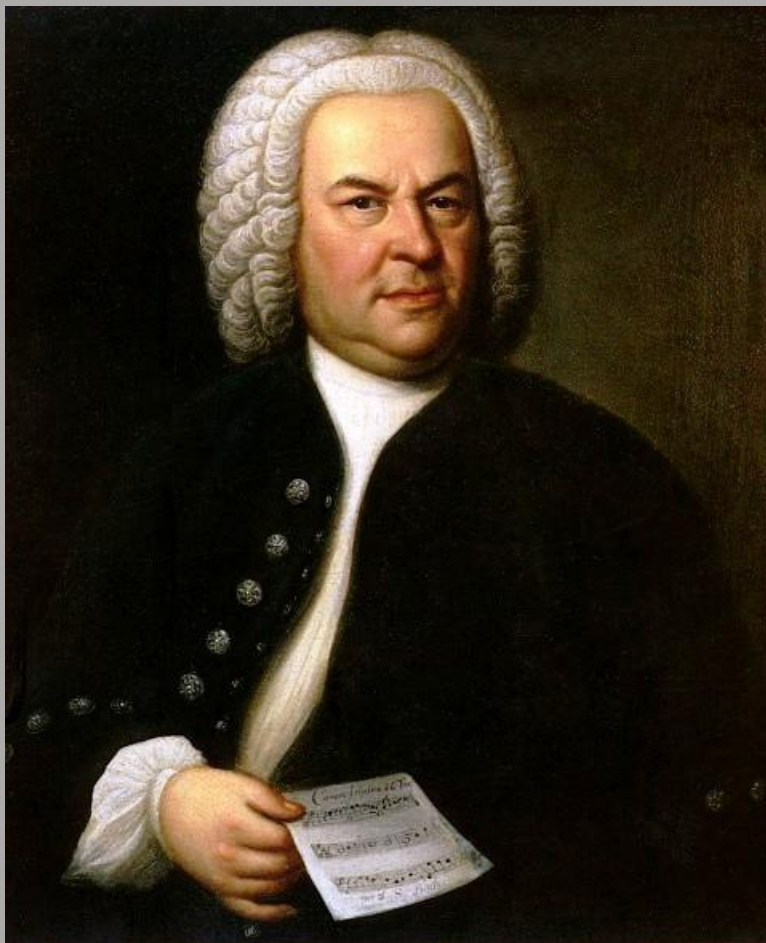


Johann Sebastian Bach



Suite BWV 1007

Transcribed and Arranged by Bryan K. Burns

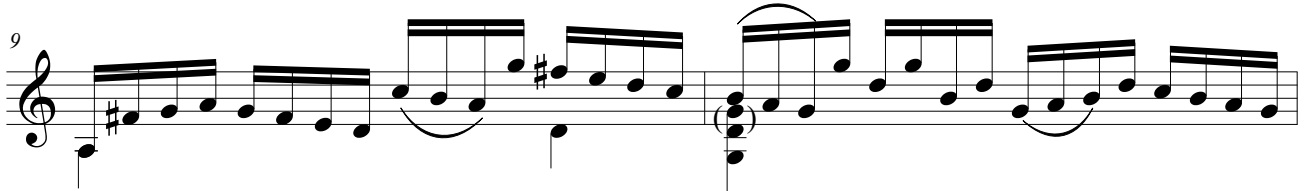
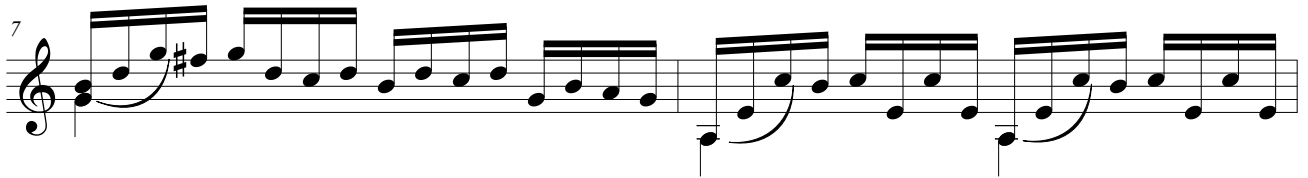
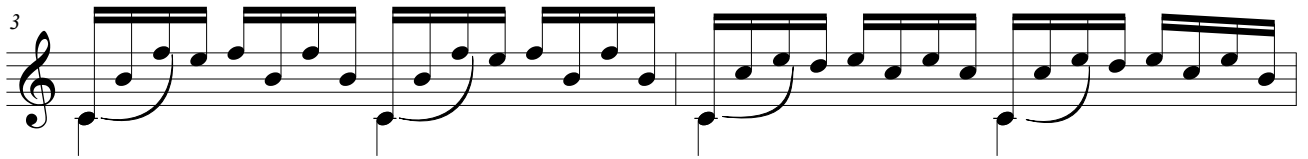
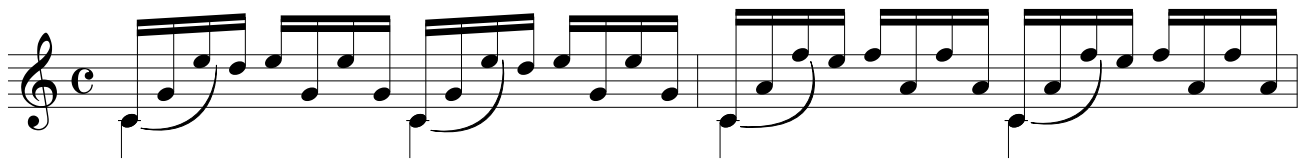
Guitar Lyceum Editions 2020



Prelude

BWV 1007

Johann Sebastian Bach



Sarabande

The musical score for "Sarabande" is presented in a single system with eight staves. The key signature is one flat (B-flat major or D minor), and the time signature is 3/4. The notation includes a variety of rhythmic values, including eighth and sixteenth notes, as well as rests. Phrasing is indicated by slurs and breath marks. The score begins with a treble clef and a 3/4 time signature. The first staff contains the initial measures, including a half note followed by a quarter note. The second staff starts with a measure number '3' and features a prominent slur over a series of notes. The third staff begins with a measure number '5' and continues the melodic development. The fourth staff starts with a measure number '7' and includes a sharp sign in the key signature. The fifth staff begins with a measure number '9' and shows further harmonic progression. The sixth staff starts with a measure number '11' and continues the piece. The seventh staff begins with a measure number '13' and includes a double bar line with repeat dots. The eighth and final staff starts with a measure number '15' and concludes the piece with a final cadence.

Guitar Lyceum Editions 2020

